

Draft
Inspection by the Invasive Species Program
Division of Ecological Resources
Minnesota Department of Natural Resources

Lake: Calhoun **DOW Number:** 34-0062-00 **Date[s] of Inspection:** 17 June 2009
County: Kandiyohi **Observer[s]:** Joe Eisterhold and Kyle Uhler
Time – on Water: 1307 h **Off water:** 1535 h
Type of inspection: To confirm the presence of Eurasian watermilfoil.

Author[s]: Kyle Uhler and Joe Eisterhold **Date of report:** 25 June 2009

Overall: The surface water temperature was 68° Fahrenheit and the water transparency with use of a secchi disc was 6 feet. Eurasian watermilfoil has never been confirmed on Lake Calhoun but, it has been confirmed in neighboring Green Lake and water flows from Green Lake into Calhoun. After delineating the lake and spending much time near the inlet, we could not confirm the presence of Eurasian watermilfoil on Lake Calhoun. Much native plant vegetation was observed. There were extensive stands of Yellow pond lilies near the inlet, at sample sites 1-9 (Figure 1). Some Curly-leaf pondweed was found but only in rare quantities.



Figure 1: Waypoint 3, Pic IMG_0217 Yellow pond lilies near inlet on Lake Calhoun, 17 June 2009.

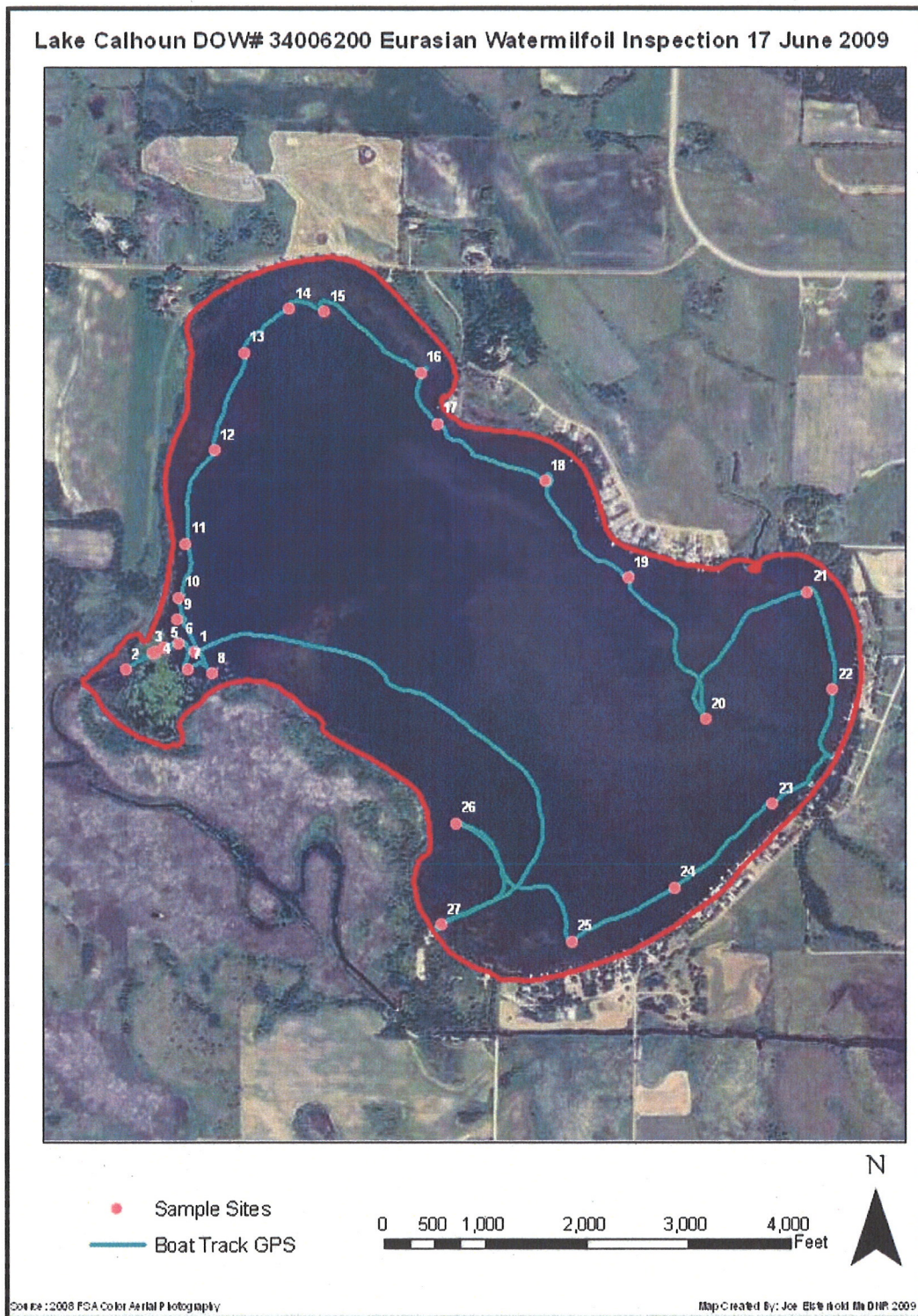


Figure 2: GPS boat track on Lake Calhoun, 17 June 2009.



Figure 3: Waypoint 3, Pic IMG_0228 Rake full of native plant vegetation, 2009.



Figure 4: Waypoint 5, Pic IMG_0227 Yellow pond lilies near inlet on Lake Calhoun, 17 June 2009.